



# Abode for Joyful Living

A home is an abode for joyful living for the whole family. A place where one can enjoy a soothing and energizing existence. **Sai Matha Garden** is designed to deliver such an optimized life experience for all residents to enjoy.

Comprising six neatly earmarked independent blocks, each seven stories tall and named after an exotic precious stone, **Sai Matha Garden** is an elegant residential enclave with all features and facilities required for comfortable living. On offer are over 400 one- and two-bedroom apartments in a choice of sizes ranging from 600 SFT to 1020 SFT.

Every apartment at **Sai Matha Garden** has the makings of a great home. Further enhancing the worth is the use of the best quality materials, features and fittings, which are in tune with contemporary style and taste.

Located in the quiet suburbs of Surathkal town, **Sai Matha Garden** is ideally situated to provide you with a life of peace and joy. Just a 10-minute drive from the National Highway, this unique location is best suited for those who seek an idyllic refuge from the rush and pressures of city life. What's more, all important elements like schools and colleges, hospitals, market and shopping centres, places of worship etc are all within easy reach from this venue.



# Surathkal

## The Coastal Pride

Surathkal, the important satellite town of Mangalore, is fast growing into busy commercial and residential hub of the region. Thanks to the presence of an elite education institution of technological excellence like NITK, this town has always enjoyed a pride of place on the coastal belt. Now with the proximity of industries like ONGC-MRPL, BASF, MCF and KISCO as also the New Mangalore Port, its importance has been growing year after year.

Its strategic location along National Highway #66 and the direct railway link through Konkan Railway and closeness to Mangalore International Airport have further enhanced its significance. **Sai Matha Garden**, situated in the heart of Surathkal, is promoted with the vision of providing high quality housing solutions at a reasonable price.

Apart from enjoying a quality lifestyle, the value of your investment in a home at **Sai Matha Garden** is also bound to appreciate greatly due to the rapid transformation of the region, making it the right choice for you..





# SAI MATHA GARDEN

Surathkal, Mangalore

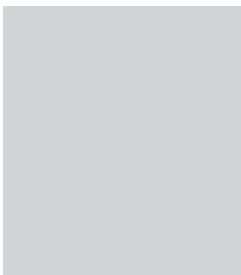
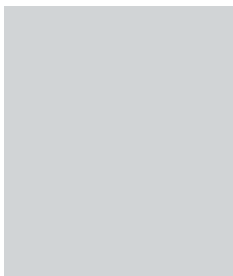
A corner of serenity



# The Promoters

**Sai Matha Garden** is conceived and promoted by **Matha Developers Pvt. Ltd.**, Mangalore's leading builders with a reputation for quality and reliability built over 16 years. With many successful projects to their credit, apartments promoted by **Matha Developers Pvt. Ltd.**, come to you with the assurance of engineering excellence and quality construction.

Hence your choice of home at **Sai Matha Garden** gives you true value for money. So make it your new address and live happily.



## Highlights

- Super Market
- Library
- Yoga / Meditation Hall
- Fully Equipped Gymnasium
- Children's Swimming Pool
- Children's Play Area And Landscaped Garden
- Outdoor Badminton Court
- Solar Lighting For Yard And Street
- Rain Water Harvesting
- Sewage Treatment Plant
- 24 Hour Backup Power Supply
- Covered Sheet Roofing For Terrace
- Jogging Track

## Specifications

- Fully framed R.C.C Structure.
- 1No Automatic Elevators of 6 passenger capacity.
- Vitrified tile flooring for Apartment.
- Design Glazed tiles for toilets & Kitchen.
- Granite Platform with stainless steel sink for kitchen.
- C.P Plumbing for toilets & Kitchen.
- Putty finished Acrylic distemper painting for walls.
- Electrical wiring using ISI standard cables and Modular Electrical switches.
- Decorative Melamine polished main entrance door.
- Powder coated Aluminium windows with MS safety grills.
- Bore well in addition to the Municipality water connection & over head water tank
- Split A/C Provision in Master Bed Room.
- Cable T.V provision.
- Telephone provision in Hall & Master bedroom.
- Provision of Exhaust fan in kitchen & Toilets.
- Provision for fixing water purifiers near the sink.
- Provision for Washing Machine in work area.
- Concrete Interlock paving for Yard & Car parking.
- Compound wall & gate.
- Project is as per the norms of Indian Vasthu.



**MATHA** *Opal*

SAI MATHA  
GARDEN

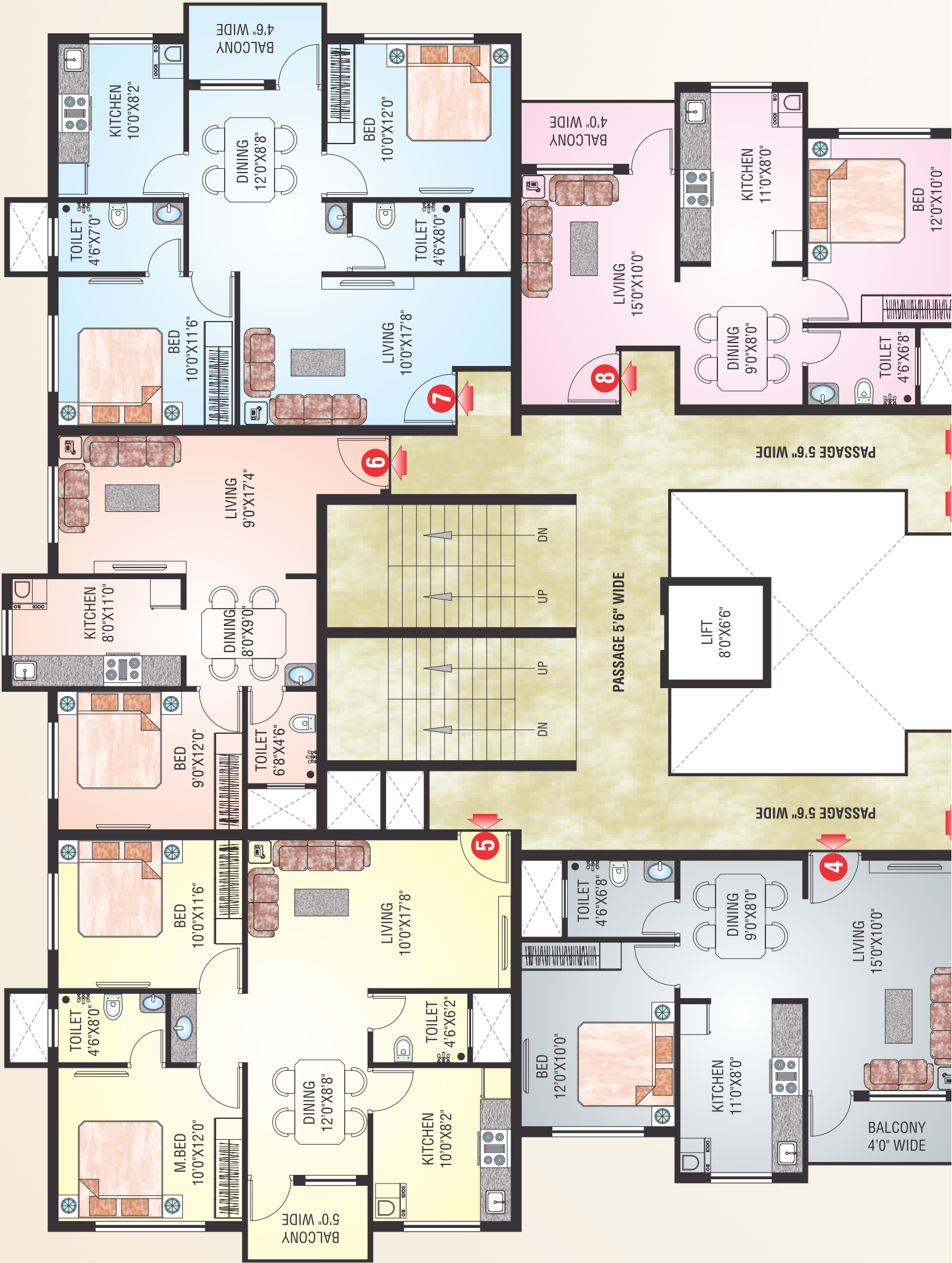


**MATHA** *Crystal*





# Typical Floor Plan



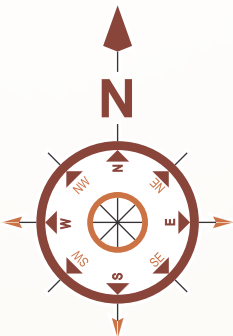




# SAI MATHA GARDEN

MATHA *Opal*

MATHA *Crystal*



## Area Statement

Flat No. 1	2 BHK	990 Sqft.
Flat No. 2	1 BHK	720 Sqft.
Flat No. 3	2 BHK	990 Sqft.
Flat No. 4	1 BHK	690 Sqft.
Flat No. 5	2 BHK	990 Sqft.
Flat No. 6	1 BHK	600 Sqft.
Flat No. 7	2 BHK	990 Sqft.
Flat No. 8	1 BHK	690 Sqft.









**1** MATHA *Emerald*

**2** MATHA *Opal*

**3** MATHA *Ruby*

**4** MATHA *Diamond*

**5** MATHA *Pearl*

**6** MATHA *Crystal*



## MATHA *Emerald*

SAI MATHA  
GARDEN



## MATHA *Ruby*





## MATHA *Diamond*

SAI MATHA  
GARDEN

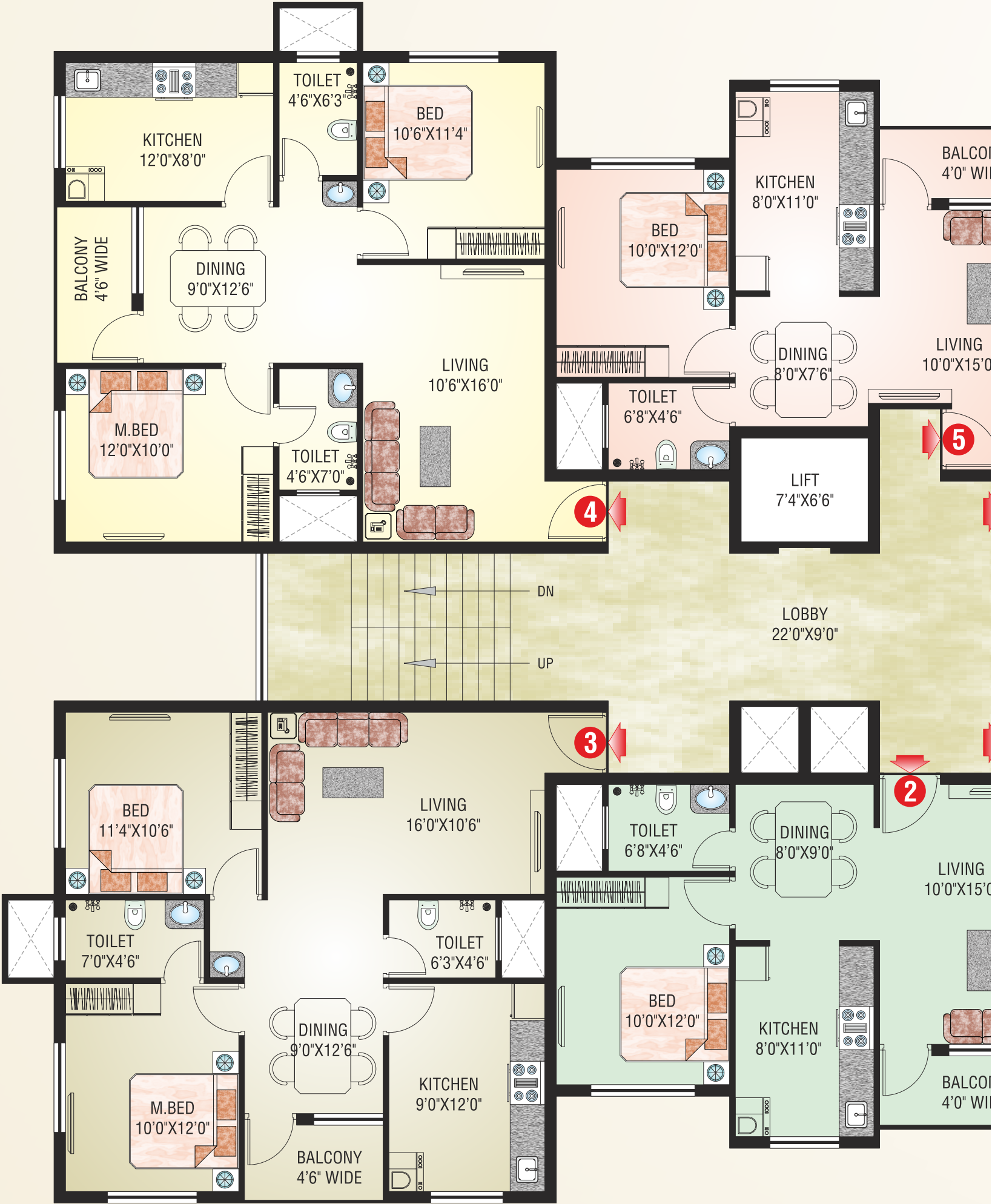


## MATHA *Pearl*





# Typical Floor Plan





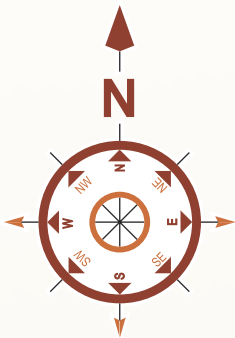
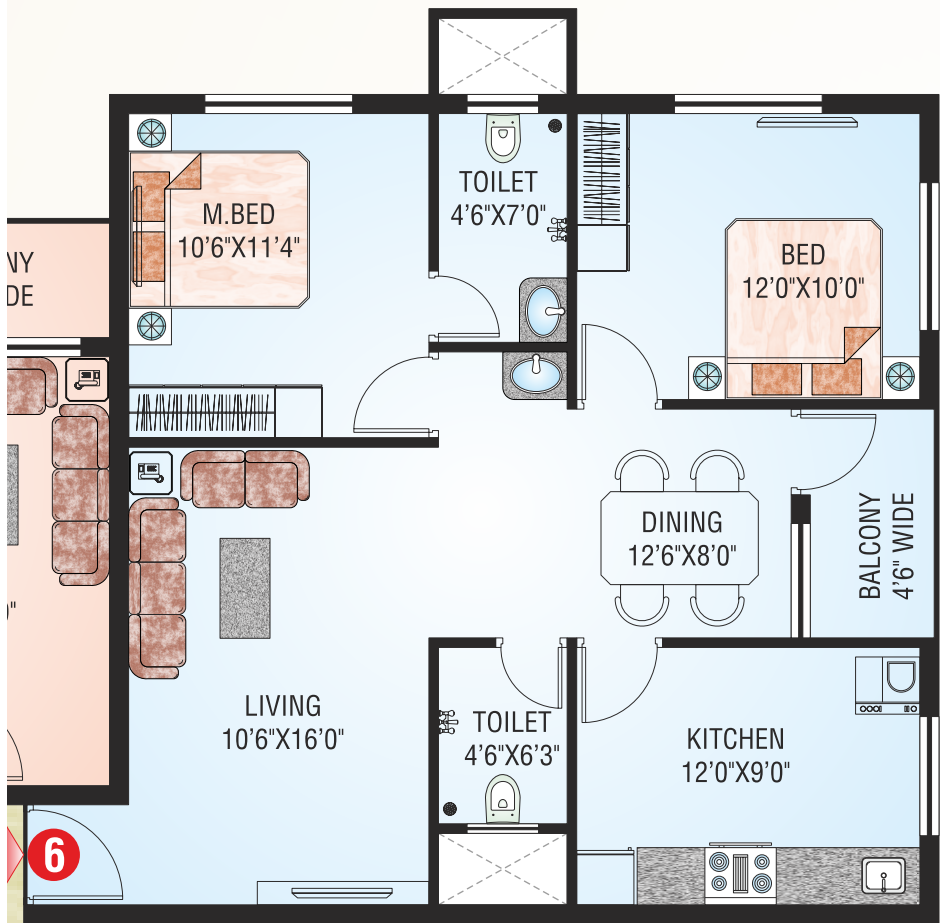
# SAI MATHA GARDEN

MATHA Emerald

MATHA Ruby

MATHA Diamond

MATHA Pearl



### Area Statement

Flat No. 1	2 BHK	1020 Sqft.
Flat No. 2	1 BHK	690 Sqft.
Flat No. 3	2 BHK	1020 Sqft.
Flat No. 4	2 BHK	1020 Sqft.
Flat No. 5	1 BHK	690 Sqft.
Flat No. 6	2 BHK	1020 Sqft.



# LOCATION MAP



# COMPLETED PROJECTS



**KATEEL** Residency  
Mukka



**MATHA** Residency  
N.H-66, Kaup



**MATHA** Residency  
N.H-66, Near Mulky Railway Station  
Haleyangadi, Mangalore

# ONGOING PROJECTS



**PANCHADURGA**  
Residency  
Bappanadu, Mulky



**MOOKAMBIKA**  
Residency  
Near Railway Station  
Surathkal, Mangalore



**MATHA** Residency  
Opp. Mount Carmel Central School,  
International Airport Road, Maryhill, Mangalore



**MATHA** Residency  
Opp. Srinivas Institutes & Hospital,  
Mukka, Surathkal

## Promoters

**MATHA** Developers Pvt. Ltd.  
Builders & Developers

**Mangalore** : #01, First Floor, Divya Enclave, M.G.Road, Mangalore - 575003.

**Surathkal** : Thara Towers, Airport Road, Surathkal, Mangalore - 575 014.

**Mumbai** : Shop No. 8, Anand Nagar B, Vimal Dairy Lane, Near Radha Complex,  
Kashinagar, Bhayandar (E)  
Email: mathadevelopers108@gmail.com  
[www.mathadevelopers.com](http://www.mathadevelopers.com)

**Contact**  
**9591677966**  
**9880279966**  
**9880727966**  
**7259269966 (Mumbai)**